



WESTERN AUSTRALIAN
LOCAL GOVERNMENT ASSOCIATION

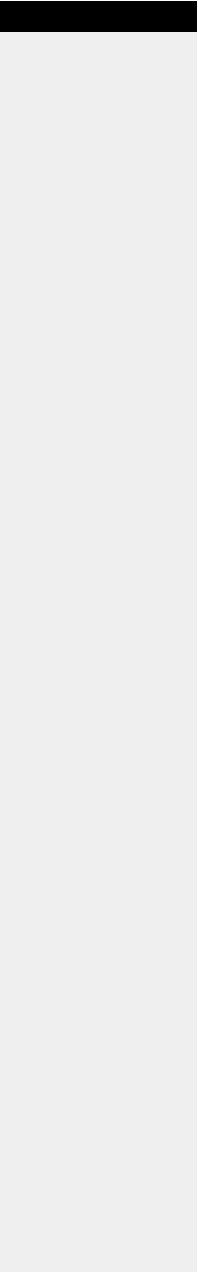


state/local government partnerships state/local government partnerships

State/Local Government Partnerships

partnerships





STATE/LOCAL GOVERNMENT PARTNERSHIPS

The Premier of Western Australia and the President, Western Australian Local Government Association, along with the Minister for Local Government and Regional Development and the President, Local Government Managers Australia (WA Division Inc) are committed to improving cooperation between State and Local Government to enhance sustainable social, environmental and economic development of Western Australia through consultation, communication,

participation, cooperation and collaboration at both strategic and project levels.

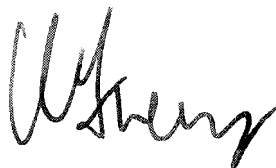
As part of this commitment, the undersigned agree that the attached Principles (Schedule 1), Template (Schedule 2) and Framework (Schedule 3) be used to underpin the development of partnership agreements between State and Local Government.



Signed by the Hon Dr Geoff Gallop, MLA
PREMIER, FOR AND ON BEHALF OF THE STATE OF WESTERN AUSTRALIA

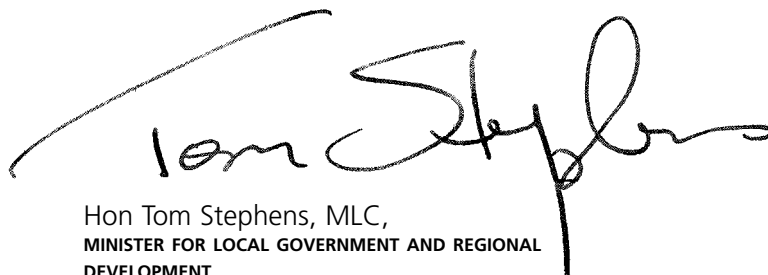


Signed by Cr Clive Robartson,
PRESIDENT OF THE WESTERN AUSTRALIAN LOCAL GOVERNMENT ASSOCIATION FOR AND ON BEHALF OF WESTERN AUSTRALIAN LOCAL GOVERNMENTS



Signed by Mr Cliff Frewing,
PRESIDENT OF THE LOCAL GOVERNMENT MANAGERS AUSTRALIA (WA DIVISION INC) FOR AND ON BEHALF OF LOCAL GOVERNMENT MANAGERS

in the presence of



Hon Tom Stephens, MLC,
MINISTER FOR LOCAL GOVERNMENT AND REGIONAL DEVELOPMENT

Dated  day of December 2002

SCHEDULE 1

PARTNERSHIP PRINCIPLES

Overarching Principle

A commitment to improving cooperation between State and Local Government to enhance sustainable social, environmental and economic development of Western Australia through consultation, communication, participation, cooperation and collaboration at both strategic and project levels.

General Principles

A commitment to:

Partnerships

- Recognise that partnerships between State and Local Government are essential to achieve sustainable social, environmental and economic development for the Western Australian community.
- Be flexible and open to new approaches to service delivery and funding.
- Be sensitive and responsive to the needs and constraints of both spheres of government at the local level.
- Recognise that new partnership agreements can be initiated by either State or Local Government.

Roles and Responsibilities

- Identify and understand the roles and responsibilities of both spheres of government.
- Ensure that these roles and responsibilities are considered and respected in all government decisions.
- Recognise and respect the role that each plays in enhancing sustainable social, environmental and economic development of Western Australia.

Communication

- Open and timely communication on issues of relevance to sustainable social, environmental and economic development of Western Australia.
- Recognise the need for confidentiality of discussions until a mutually agreed time.
- Recognise that State and Local Government may use different processes to communicate with constituent groups.

Consultation

- Purposeful consultation at mutually agreed stages to facilitate understanding and agreement.
- Recognise and account for the different decision making processes of both spheres of government.

Service Delivery

- Continual improvement in the efficiency, effectiveness, timeliness and appropriateness of government service delivery.

Outcomes

- Agreements with defined and agreed outcomes and performance measures.
- Promote a realistic approach to funding and resource issues.
- Contribute resources and expertise to the partnership process.

Accountability

- A transparent approach where changes to roles, responsibilities and budgets are negotiated and agreed and resources necessary to implement changes are identified.
- Undertake open assessments of the effectiveness of agreements.
- Have clearly defined reporting, dispute resolution and review mechanisms.

SCHEDULE 2

TEMPLATE FOR PARTNERSHIP AGREEMENTS

1. Statement of Purpose

Partnership Agreement for

This provides for a short title of the agreement such as:

Promoting growth and development

2. Partners

This would include all State or Local Government agencies or organisations who are involved in the partnership.

For example it may include:

- *Western Australian Government.*
- *The Western Australian Local Government Association.*
- *Government Departments.*
- *Statutory Authorities (including the Regional Development Commissions).*
- *The Local Government Managers Australia.*
- *Specific local governments.*

3. Objectives

This should clearly identify what the partnership agreement is for. For example, the objective could be:

- *To identify opportunities for sustainable social and economic development.*
- *To review planning processes.*
- *To foster the principles of sustainable regional, rural and remote development.*
- *To develop effective lines of communication and consultation between State and Local Governments.*
- *To promote the sharing of resources in metropolitan, regional and remote locations.*

4. Principles

This would reflect the principles developed by the Partnership Steering Group and may also include some specific principles that are particularly relevant to a specific agreement.

PARTNERSHIP PRINCIPLES

OVERARCHING PRINCIPLE

A commitment to improving cooperation between State and Local Government to enhance sustainable social, environmental and economic development of Western Australia through consultation, communication, participation, cooperation and collaboration at both strategic and project levels.

General Principles

A commitment to:

Partnerships

- Recognise that partnerships between State and Local Government are essential to achieve sustainable social, environmental and economic development for the Western Australian community.
- Be flexible and open to new approaches to service delivery and funding.
- Be sensitive and responsive to the needs and constraints of both spheres of government at the local level.
- Recognise that new partnership agreements can be initiated by either State or Local Government.

Roles and Responsibilities

- Identify and understand the roles and responsibilities of both spheres of government.
- Ensure that these roles and responsibilities are considered and respected in all government decisions.
- Recognise and respect the role that each plays in enhancing sustainable social, environmental and economic development of Western Australia.

Communication

- Open and timely communication on issues of relevance to sustainable social, environmental and economic development of Western Australia.
- Recognise the need for confidentiality of discussions until a mutually agreed time.
- Recognise that State and Local Government may use different processes to communicate with constituent groups.

Consultation

- Purposeful consultation at mutually agreed stages to facilitate understanding and agreement.
- Recognise and account for the different decision making processes of both spheres of government.

Service Delivery

- Continual improvement in the efficiency, effectiveness, timeliness and appropriateness of government service delivery.

Outcomes

- Agreements with defined and agreed outcomes and performance measures.
- Promote a realistic approach to funding and resource issues.
- Contribute resources and expertise to the partnership process.

Accountability

- A transparent approach where changes to roles, responsibilities and budgets are negotiated and agreed and resources necessary to implement changes are identified.
- Undertake open assessments of the effectiveness of agreements.
- Have clearly defined reporting, dispute resolution and review mechanisms.

5. Scope of the Agreement

This would identify:

- The issues to be addressed by the agreement and strategies to address the issues including clear linkages with relevant State and Local Government policies.
- The strategies to be adopted.
- The expected outcomes.
- Timeframes.

- Responsibilities.
- Resource requirements and any implications for those involved.
- Performance indicators.

It would also include an Implementation Plan that would incorporate timeframes and responsibilities.

6. Management

This would identify the management process for the Agreement including for example, the creation of a Steering Committee to oversee the process. This would also include an assessment of the benefits and risks involved and how these will be managed purposefully through the partnership process, and a reporting regime.

7. Review

This would specify when and how the Agreement was to be reviewed prior to the end date. This review should address the workings of the Agreement and its outcomes.

8. Implementation Plan

This would specify tasks, responsibilities, timeframes and the resources required at various stages of the project.

9. Dispute Resolution Process

This would specify the mechanisms to be followed for resolving disputes between the partners.

10. Break Clause

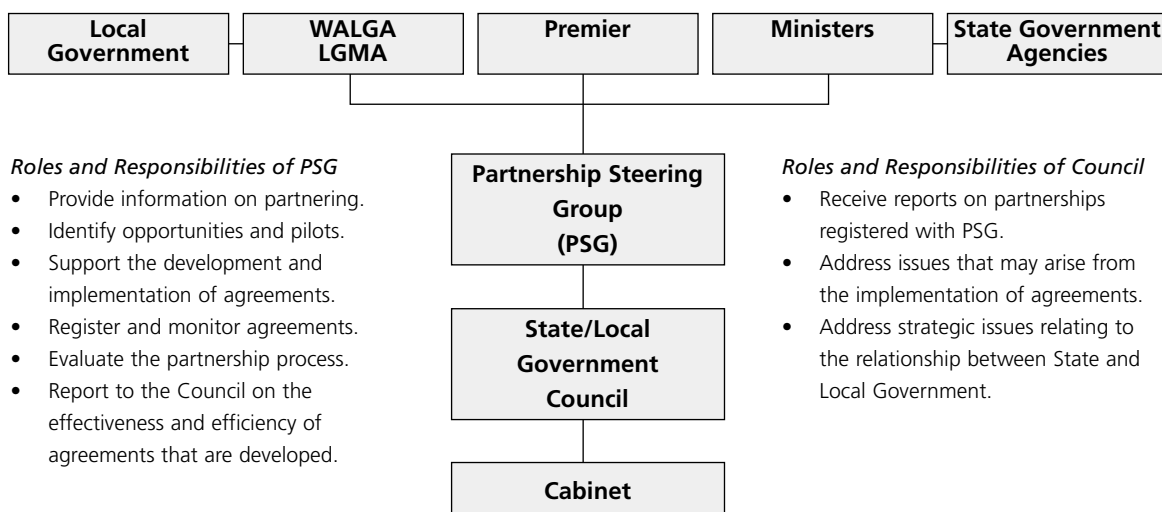
This would specify the mechanisms to be followed for parties to modify or terminate the Agreement. Prior to the decision to terminate, the matter must be referred to the Partnership Steering Group.

11. Agreement in Good Faith

This is an agreement made in good faith based on the commitment of the parties to an effective and sustainable partnership. It does not seek to establish a legal relationship between the parties.

SCHEDULE 3 FRAMEWORK FOR STATE/LOCAL GOVERNMENT PARTNERSHIPS

The following provides a framework for State/Local Government Partnerships.



This framework includes local government as a partner in policy formation and decision making on issues which are of state or community interest to Local Government, or where both spheres of government are the major stakeholders.

The roles and responsibilities of the PSG are outline above.

The State/Local Government Council would comprise the:

- Premier;
- Treasurer;
- Minister for Local Government and Regional Development;
- Minister for Planning and Infrastructure;
- President WALGA;
- President LGMA; and
- other Ministers as required.

The roles and responsibilities of the Council are outlined above. It is anticipated that the Council would meet three times a year. Administrative support for the Council would be provided by the Department of the Premier and Cabinet (with assistance from the Department of Local Government and Regional Development).

To be effective the model requires:

- A commitment to the establishment and ongoing development of long-term partnership between State and Local Government.
- An acceptance that both State and Local Government will be directly involved in decision making and policy formulation that can have significant impact on the operations of each other.
- A commitment of resources to ensure the State/Local Government Council and the Partnership Steering Group can respond to relevant issues in an effective and timely manner.



Department of **Local Government
and Regional Development**
Government of Western Australia

Department of Local Government
and Regional Development
GPO Box R1250
PERTH WA 6844
Tel: (08) 9222 0511
Freecall 1800 620 511
(Country callers only)
www.dlgrd.wa.gov.au



WESTERN AUSTRALIAN
LOCAL GOVERNMENT ASSOCIATION

Western Australian Local
Government Association
PO Box 1544
WEST PERTH WA 6872
Tel: (08) 9321 5055
www.walga.asn.au



Local Government Managers
Australia (WA Division Inc)
Suite 14, 4 Ventnor Avenue
WEST PERTH WA 6005
Tel: (08) 9481 6531
www.lgma.org.au/wa